

RI - EXTRA

REGIONAL NEWS UPDATE

December 09/ January 2010

Vol. 3 No. 6

Rotary International South Pacific & Philippines Office

(covering Australia, Philippines, New Zealand, PNG, Timor Leste & Pacific Nations)

Family and Rotary Awareness Months



Dear District Governors and Senior Rotarian Leaders,

I have decided to change the format and introduce some of the staff from the RI Regional Office. As you know Philippine Rotarians represent 31% of our “clients.” It is by coincidence that 30% of our staff originate from the Philippines. We have one Filipina in each of the major sections. I am proud to introduce you to our staff members starting from left to right , Desiree, Mary Jayne and



Krissy.

Desiree Bonifacio (Finance) joined the Rotary International South Pacific & Philippines office at Parramatta on 27 November 2006 as Finance Coordinator. Desiree is a qualified accountant.

Desiree worked for SGV & Co., Robert Bosch and Bax Global in the Philippines before joining Rotary International.

Desiree was a native of Pasig City, Philippines before moving to Australia. Hence, aside from English, she is also fluent in Tagalog / Filipino.

Mary Jayne Desmond (CDS) joined the Rotary International South Pacific & Philippines Office at Parramatta as Correspondent, Club and District Administration on 12 June 2007.

Mary Jayne was born in Manila, but lived most of her life in the Laguna, Philippines before moving to Australia. Hence, aside from English, she is also fluent in Tagalog/Filipino. Before joining Rotary International, Mary Jayne worked for three years for IBM Australia Pty. Ltd. as an Administrative Assistant. Mary Jayne is happy to be part of Rotary International and to support the members of Rotary as they serve the worldwide community.

Inside this issue:

Expenses Tips	2
Nomination for RI Directors	2
RI Dues	
Slow Start to Annual Giving	3
Continues	
PHF Medallions	4
Promoting “Doing good in the world”	
Membership Statistics	
Leaders stretch lead in cup battle	5
Amelia pulls in the dollars for Polio	6
The box is back	7
Matching Grants	8
Official Licensed Vendors	9
Major Donors	10

Krissy Aure-Canson (TRF) joined the Rotary International South Pacific & Philippines Office at Parramatta on 24th September 2007 and took on the role as The Rotary Foundation Admin officer.

Born and raised in Manila Krissy moved to Australia in 2002. Other than English, she also speaks fluent Tagalog/Filipino. She is also an artist at heart and at present writing originals songs with her band ZeroGlitch, a reggae/funk/rock band.

Before joining Rotary International, Krissy Aure-Canson worked for Bravo Consolidation Travel in Office Support. Krissy is glad to be part of Rotary International and to be able to support the members of Rotary, she hopes to make a difference in some way.

Frank Pezzimenti

International Office Manager

South Pacific and Philippines Office (Frank.Pezzimenti@rotary.org)



EXPENSES TIPS

GETS EXPENSES

The only expenses for attending Governor Elect Training Seminars (held immediately prior to the recent Institutes) that RI reimburses are those incurred during your year as District Governor-elect. You may claim up to 3 nights hotel accommodation and 2 days of meals.

There are two dates for submission to keep in mind:

15 May 2010 – this will enable you to receive reimbursement with your initial 70% advance which will be paid in July 2010.

31 July 2011 – at the end of your term as governor, to be submitted with your DG expenses claim.

You will find the form in your DGE Forum through Member Access. Please fill it out, sign it, and forward it to our office together with your hotel folio showing that the account has been paid and your receipt for the registration fees – remembering to claim only the meals component for yourself.

TELEPHONE AND POSTAGE

A reminder to the DGsE that you are able to claim your telecommunications (phone, fax, mobile and internet) costs from 1 January 2010.

If you have incurred any of these costs prior to 1 January 2010 during preparation for your AG Training, you can claim them on that expenses form. The form can be found in the DGE Forum for the DGsE, and in the DGTM for the current governors.

For more information please contact Joy.Walker@rotary.org or Deslyn.Maber@rotary.org

NOMINATIONS FOR RI DIRECTORS

We have received some enquiries regarding the timing for nominations for the role of RI Director.

Information has recently gone out to District Governors in Zone 8 regarding the selection of the Nominating Committee. It is anticipated that the committee will meet in September 2010 to choose the RI Director elect to serve from 2011.

We understand that the information regarding the nominations for the role of Director will be sent to District Governors in July 2010.

For more information please contact Joy.Walker@rotary.org or Deslyn.Maber@rotary.org

RI Dues

As December holidays are forthcoming, in order to avoid club termination (with balances US\$250.00 and over), please make sure that dues are paid before 23rd December 2009.

For more information please contact Xiang.Jiang@rotary.org or Desiree.Bonifacio@rotary.org



Slow start to Annual Giving continues

The surprisingly slow start to the year has continued into October and yet again we see ourselves going backwards. Compared to last year, we've dropped from US\$300,000 behind YTD September figures to US\$420,000 behind at YTD October and that's a problem of serious proportions.

All three countries are struggling but Australia is in by far the poorest position with a drop of in excess of US\$300,000. Twenty of the twenty three Australian districts are well down on last year, one is just down and two are ahead. New Zealand is just about in line with 2008 and that's pretty amazing when we consider no contributions were made in October.

ANNUAL PROGRAMS FUND RANKING - YTD OCTOBER

AUSTRALIA

DISTRICT	YTD OCT 08	YTD OCT 09	INCREASE
9800	70,685	40,846	-42%
9810	50,563	39,792	-21%
9630	53,361	36,588	-31%
9790	32,779	21,753	-34%
9640	2,489	20,736	733%
9680	85,193	20,338	-76%
9750	28,060	20,229	-28%
9450	17,436	19,616	12%
9570	24,350	16,411	-33%
9600	39,579	15,300	-61%
9710	16,271	15,275	-6%
9820	31,426	14,595	-54%
9460	15,358	12,271	-20%
9780	39,279	12,225	-69%
9650	29,159	10,683	-63%
9690	18,431	10,532	-43%
9550	24,713	9,804	-60%
9470	25,302	8,854	-65%
9500	19,444	8,076	-58%
9700	11,565	6,195	-46%
9670	23,280	5,380	-77%
9830	30,213	4,350	-86%
9520	13,366	2,980	-78%
TOTAL	702,300	372,828	-47%

NEW ZEALAND

DISTRICT	YTD OCT 08	YTD OCT 09	INCREASE
9940	5,913	20,377	245%
9980	2,152	12,354	474%
9910	4,601	8,892	93%
9930	18,097	1,645	-91%
9970	21,267	1,220	-94%
9920	(8,465)	(1,394)	-84%
TOTAL	43,565	43,094	-1%

PHILIPPINES

DISTRICT	YTD OCT 08	YTD OCT 09	INCREASE
3810	59,265	61,200	3%
3800	71,464	58,048	-19%
3780	27,087	47,327	75%
3830	84,944	41,369	-51%
3790	37,193	28,447	-24%
3860	28,051	21,300	-24%
3850	17,753	20,306	14%
3820	37,119	17,710	-52%
3770	46,975	15,378	-67%
3870	500	7,720	1444%
TOTAL	410,352	318,803	-22%

NZ have four districts up and two badly down but we should see some changes there as funds flow through in November.

The Philippines is also a slow starter this year and are currently sitting at US\$100,000 off last year's pace. They have seven of their ten districts well behind but thankfully there are three pretty good performers in the group.

We always talk about contributions to The Foundation coming in with a rush towards the end of the year but the need to service the millions of people looking for our support is a daily occurrence. A strong, steady cash flow is critical to the process of "doing good in the world" every day of the year and the people we help simply can't wait. The sooner the cash start coming in, the better we can help, and the more we can do.

November was our Foundation month and contributions have been far better than the average of the first four months but we need to follow this up with a strong December/January performance to drag back some of that shortfall. Governors are urged to remind their clubs that one of the key elements of a successful club is strong support for the Rotary Foundation and the best way of doing that at the moment is through contributions to the Annual Programs Fund.

It's never too late to start running!

For more information please contact Bruce.Allen@rotary.org

Congratulations to DGsE

We are happy to congratulate all our District Governors-elect for having successfully completed your GETS training ahead of the International Assembly. Some of you have completed the Club and District Support component via Webinars (NZ), by receiving a personal presentation from us at GETS (Australia) and others via a Powerpoint presentation (Philippines).

We look forward to seeing all of you in San Diego at the International Assembly.

If any of you have any questions, regarding any part of your training, or information you have received, please don't hesitate to contact either Joy.Walker@rotary.org or Deslyn.Maher@rotary.org

PHF Medallions now a purchase item.

Clubs and Districts are reminded that as of July 1st this year, the Paul Harris Fellow medallion is now a purchase item and does not automatically come with the PHF regalia. This change was introduced as a cost saving measure as The Foundation battled its way through the serious financial down-turn and will remain in place as we go forward. The cost of a PHF has remained unchanged at US\$1,000 for the past 52 years but the cost of providing badges, certificates and medallions has increased enormously. With tens of thousands of PHFs being issued each year, the financial burden of providing this medallion is staggering and it was with great reluctance that The Trustees took this decision.

Not all clubs will want the medallion while many will. If required for the presentation, clubs should ensure that they order at the time they submit their PHF request and send a separate cheque made out to Rotary International. The cost is US\$15 (plus GST in Australia).

For more information please contact Kristenne.AureCanson@rotary.org

Promoting "Doing Good in the World"

We've received an email from PP Margaret Dean from the St. Ives club in District 9680 and it's interesting to see how much she believes in the work The Rotary Foundation and Rotary in general are doing. This is the footer on every email Margaret sends out, whether it be business or personal:

"I believe that each of us has an obligation to level the playing field of life. Schools that have no books, communities without water, and people without access to medical care are not someone else's problem. We all have a capacity to make a difference somewhere. We just have to decide if we have the will to do it"

Imagine the difference we could make if all 1.2 million Rotarians sent out similar messages to everyone they contact.

For more information please contact Bruce.Allen@rotary.org

Membership Statistics as of November 2009

Please note that the Statistics are updated after the 10th of every month.

Area	Districts	Clubs	Rotarians	1 July 09	+/- 1 July 09
<i>International</i>	531	33,699	1,216,768		
Australia/PNG/ Timor/Sol Isla	23	1,164	33,482	33,116	366
New Zealand & Pacific	6	266	9,778	9,714	64
Philippines	10	806	20,380	20,173	207
TOTAL (SPPO)	39	2,236	63,640	63,003	637

Leaders stretch lead in Cup battle

A big effort from D9810 pushes them up ten places in the Australia Cup and just a nose in front of last month's leader D9630. These two are well out in front of the pack at this stage and they'll certainly take a bit of running down. The pace in the Philippines Cup is pretty slow with very few changes in field placings.

D3800 is well clear but D3810 is always ready to increase the pace when needed so these two should have a great battle. With nothing coming in from New Zealand last month the race has slowed down to walking pace - but surely they must have *something* in reserve?

The goal per capita for Oct was \$33.33 however only a few districts are close to achieving this. We have two Aussie districts in the region of \$29 and one Philippines district in the same region.

PER CAPITA GIVING - RANKING

AUSTRALIA

DISTRICT	YTD OCT 08	YTD OCT 09	Change
9810	\$38.16	\$29.54	-23%
9630	\$42.12	\$29.06	-31%
9450	\$18.07	\$19.01	5%
9800	\$25.20	\$14.50	-42%
9570	\$21.76	\$14.47	-34%
9640	\$1.79	\$14.28	698%
9750	\$18.62	\$13.36	-28%
9790	\$18.36	\$12.19	-34%
9460	\$15.00	\$11.49	-23%
9470	\$31.51	\$10.65	-66%
9690	\$18.38	\$10.50	-43%
9680	\$44.58	\$10.44	-77%
9710	\$10.98	\$10.14	-8%
9820	\$20.83	\$9.73	-53%
9600	\$21.52	\$8.34	-61%
9550	\$22.59	\$8.15	-64%
9650	\$18.30	\$6.56	-64%
9780	\$18.74	\$5.95	-68%
9500	\$13.20	\$5.52	-58%
9700	\$9.80	\$5.15	-47%
9670	\$20.53	\$4.65	-77%
9830	\$21.38	\$3.07	-86%
9520	\$8.66	\$1.97	-77%
TOTAL	\$21.12	\$11.07	-48%

NEW ZEALAND

DISTRICT	YTD OCT 08	YTD OCT 09	Change
9940	\$2.71	\$9.41	247%
9980	\$1.56	\$9.16	487%
9910	\$3.52	\$6.82	94%
9970	\$14.64	\$0.88	-94%
9930	\$9.31	\$0.85	-91%
9920	-\$4.78	-\$0.78	-84%
TOTAL	\$4.34	\$4.34	0%

PHILIPPINES

DISTRICT	YTD OCT 08	YTD OCT 09	Change
3800	\$38.03	\$29.44	-23%
3810	\$29.47	\$23.97	-19%
3780	\$12.39	\$20.33	64%
3850	\$14.08	\$15.66	11%
3830	\$42.22	\$15.35	-64%
3770	\$31.89	\$11.41	-64%
3790	\$16.38	\$10.66	-35%
3860	\$12.13	\$8.76	-28%
3820	\$15.23	\$6.96	-54%
3870	\$0.51	\$6.71	1216%
TOTAL	\$21.81	\$15.19	-30%

OCTOBER TARGET \$33.33

The Philippines average of \$15.19 is not even half-way to the mark, Australian average of \$11.07 is well short of half way while the New Zealand average is almost not on the board.

Getting to \$33.33 by the end of October means something like 27 cents a day for each of the Rotarians in our region and that doesn't seem like a big hurdle.

It can be a combination of club and personal giving or it can be all one, or all the other.

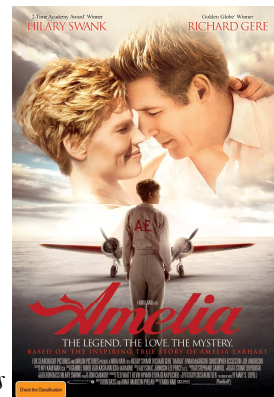
The important thing to remember is that it's the amount of money needed to do the things we do, year in and year out, and if it isn't at that level we simply have to do less. That shouldn't be an option!

For more information please contact Bruce.Allen@rotary.org

Amelia pulls in the dollars for Polio

The movie night during the week commencing November 8th has certainly proved to be a hit in some areas with total fundraising coming in at around the \$30,000 mark. With just 20 venues out of an estimated potential of 100, the result was an outstanding success for those who took the time to make it work. The following are comments from Bob Brigden, AG for group 7 in D9520 in Adelaide:

"We had 186 attendees at the Chelsea Cinema at Kensington Park on Monday November the 9th. The Rotarians in attendance supplied a plate of supper and we supplied a Champagne and orange refreshment. The cost of the tickets was set at \$17 each and we had a surplus of \$1286 after all costs were deducted. A raffle was run and produced a further \$410 for Polio Plus. 3 of the prizes collected by the Rotary Club of Campbelltown were held back and auctioned off at the next Campbelltown meeting and raised a further \$555 for Polio Plus.



In summary a total of \$1696 was raised for Polio Plus directly from the film night with a further \$555 raised because of the film night. I will be splitting up the profit from the night by the numbers of tickets sold per Club in Group 7 and forwarding this on to the Foundation.

It was a great night!"

And how about this one from Rick Thornton RC of Bribie Island in District 9600?

"About a month ago at a club brainstorming session we decided to raise major funding for End Polio Now. Suggested by one member, who lost his brother to polio recently, a number of events have been planned under the umbrella of "The Bribie Bridge of Gold". Our bridge is 750 metres long and at \$40 a metre that would raise \$30,000 if gold coins were placed end to end. So we are trying to raise that sum by involving as much of the community as we can. We already have over \$2000 from donations from members, the local orchestra (\$1000), a Tupperware party and our normal Market raffle. We just had the film night "Amelia" which was a sell-out and raised about \$1200. Events that are planned or underway are:

- *"Mega Raffle" with prizes in the vicinity of \$1200 (white goods and a PC Notebook (drawn 31 Jan 2010)*
- *Charity Golf day on 11 March 2010*
- *Poster design contest at the local high school*
- *Colouring in competition at the 2 state schools*
- *Rotary Australia Day Ball on 23 Jan 2010*
- *Car Rally in Feb 2010*

Fun Run/Walk in cooler weather (say April)

Other ideas are currently being investigated to seek corporate donations. Even a "bucket brigade" has been proposed. A winery bus trip is being looked at. Not sure how we will go covering the entire bridge but we'll give a good shot!

Local newspaper PR is in hand with monthly articles (at least) on Polio including the stories of local people who are living with the disease. ABC radio wants an interview this weekend I believe.

Continued over page

(

(continued from previous page) How easy it is to support this great Rotary initiative. We'll be looking at continuing this program and as we become more aware of the potential it presents, results will grow as more and more clubs and districts come on board. The potential is simply amazing but it does require a little bit of organizing and a willingness to have a bit of fun. Thanks to all those clubs, districts and Rotarians who made this night such a success for our "End Polio Now" program. You've made a huge difference to the lives of 30,000 children.

(for more information please contact Bruce.Allen@rotary.org)

The Box is back!

After an absence of something like two years, the popular Foundation Moneybox is back. Thanks to the outstanding generosity of Major Donor Ron Geary, we're now in a position to service the needs of those clubs wanting to get the concept of ***Every Rotarian Every Year*** roaring along. Ron's taken the bull by the horns and run off 10,000 of these priceless little gems in no time at all and he wants clubs in our region to share in the spoils. They'll be available on request at no charge so if any clubs want to get their program moving just send the request in to Parramatta.



This is a great way to work towards the concept of every single Rotarian in our region being part of the Centurion or Sustaining Member programs. Something as little as \$2 or \$3 a week, or 100 pesos for our Philippines colleagues will do the job and make an enormous difference to people desperately in need of our help.

Just to reinforce one simple fact! If every Rotarian in our region gave the equivalent to US\$100 a year we'd generate close to US\$6.4 million in Annual Giving. That compares ***very*** favourably to our 2008/09 result of US\$4.6 million.

For more information please contact Bruce.Allen@rotary.org

Competitive Matching Grant Success

Districts in our region did well when the Trustees met in October to determine which of the Competitive Matching Grants on the table would be approved. The following applications involving our districts were successful:

MG#71211. A grant of US\$39,000 to the Rotary Club of Suva East (D9920) and to the Rotary Club of Wasilla (D5010) to help provide a waste water system, education and training for three communities in Viti Levu Island Fiji.

MG#71234. A grant of US\$38,081 to the Rotary Club of Makati Rockwell (D3830) and to Districts 9500, 9520, 9800 and 9810 to help provide a decentralized wastewater treatment system to support 400 families in Guiuan, The Philippines.

MG#71199. A grant of US\$49,771 to the Rotary Club of Khartoum (D2450) and the Rotary Club of Adelaide (D9500) to help provide two hafirs (harifat/wells) to collect rain water and to install water collection canals, and a water filtration system for 6,000 people living in eight villages in Gadarif State, Sudan. Conditional on the provision of additional supplier information.

Great work from committed Rotarians, clubs and districts!

For more information please contact Bruce.Allen@rotary.org

Official Licensed Vendors of Rotary International—Lots to choose from

There are 125 official licensed vendors that can supply RI merchandise to any Rotarian around the globe. These are listed on the Rotary International website www.rotary.org. In our part of the world there are 10 licensed vendors in Australia and 2 in the Philippines.

Below you will find the link that will take you directly to the list which provides you with contact details and information on what they can supply.

<http://www.rotary.org/en/Members/GeneralInformation/LicensedSuppliers/Pages/LicenseesWorld.aspx>

UPDATED INFORMATION ON THE USE OF ROTARY MARKS

Recently, the Intellectual Property Department updated many of the Rotary Marks educational documents. Rotary Marks informational documents, are posted on the RI Web site, see list below.

- ◆ Guidelines on using the Rotary Marks <http://www.rotary.org/en/members/policiesandprocedures/RotaryNameandmarks/Pages/ridefault.aspx>
- ◆ Proper Use of the Rotary Emblem <http://www.rotary.org/en/AboutUs/SiteTools/Graphics/Pages/properuse.aspx>.
- ◆ Best print design practices http://www.rotary.org/en/AboutUs/SiteTools/Graphics/Pages/print_design.aspx
- ◆ Best Web site design practices http://www.rotary.org/en/AboutUs/SiteTools/Graphics/Pages/web_design.aspx
- ◆ Rotary Name and Emblem Use for Projects http://www.rotary.org/RIdocuments/en_pdf/rotary_marks_projects.pdf
- ◆ General Information about the Rotary Marks (Did You Know) http://www.rotary.org/RIdocuments/en_pdf/rotary_marks_general.pdf
- ◆ Rotary name and Emblem Use Guidelines for Projects http://www.rotary.org/RIdocuments/en_pdf/rotary_marks_projects.pdf
- ◆ RI Visual Identity Guide http://www.rotary.org/RIdocuments/en_pdf/547en.pdf

If you have any questions regarding the use of the Rotary Marks, or would like to discuss whether a particular project or other use of the Marks is in compliance, please do not hesitate to contact Joy.Walker@rotary.org or Deslyn.Maher@rotary.org



2010 Convention

First deadline to register for the Convention expires on 15 December 2009. For Rotarians traveling to USA before or after the Convention and do not have a valid US Visa, please apply well in time.

The application form should be filled completely and accurately, attaching as many supporting documents as possible.

New Member Access privileges for club executive secretaries

Club executive secretaries worldwide have been assigned club secretary-level access privileges in Member Access. Club presidents and secretaries can assign a club executive secretary via the 'Update Club Data' page in Member Access or by sending an e-mail to data@rotary.org.

Club executive secretaries will have the new access level automatically when they log in.

Office Closure

The Office of Rotary International will be closed on the following days over the Christmas and New Year Period;

Thursday 24th, 29th - 31st of December 2009. The office will re-open on Monday 4th January 2010.

Wishing you all a Happy Holiday/Merry Christmas and a Happy and Safe New Year



Rotary International Exchange Rates against US\$

Date	Australia	New Zealand	Philippines
Oct 09	1.15	1.42	48.00
Nov 09	1.08	1.33	48.00
Dec 09	1.08	1.33	48.00
Jan 09– Projected	To be advised	1.35	47.00

Rotary International Motor Vehicle Rates - Per KM Rate

Date	Australia AU\$	New Zealand NZ\$	Philippines PHP
Oct 09	0.7245	0.9514	26.88
Nov 09	0.6804	0.8911	26.88
Dec 09	0.6804	0.8911	26.88
Jan 09– Projected	TBA	0.9045	26.32

Major Donors and The Rotary Foundation

Making a donation is a very personal decision and people make the choice based on a number of different factors that range in importance to them. Some people give because they identify with a cause, others because they want to improve the welfare of others. Some people donate because they believe in the goals of an organisation and to be recognised as supporting those goals. Others feel a responsibility to give back, and others donate because it brings them tax benefits.

Giving to The Rotary Foundation fulfils all of these reasons and whatever the reason, we all know that giving to benefit others is good. We also know that giving makes us feel good and that by giving we are making a life changing difference for someone in need.

Major Donors are couples or individuals, who for any one of these reasons are passionate supporters of The Rotary Foundation. Becoming a Major Donor can happen with one donation of US\$10,000 or it can happen over a period of time such as a Paul Harris Society member contributing US\$1,000 every year for ten years.

Major Donors make an incredible difference. Their donations to any of The Rotary Foundation Programs can mean the difference between hundreds of children being vaccinated against Polio or catching a crippling deadly disease, between a village having clean water or dirty diseased water, between a community's literacy or illiteracy.

Through The Rotary Foundation a mosquito net to protect against life threatening Malaria only costs \$5 and 70 cents buys a rapid HIV Test that can be used to reduce the chance of a mother passing the deadly disease to her child from 70% down to only a 2% chance. When you consider how much these things cost and how many of them are needed then you realise the power that your US\$10,000 has to changes lives.

Major Donors also understand the way the Foundation works and the good that is done through donating to The Rotary Foundation.

There are different Major Donor levels, to recognise contributions that have been made. These are represented by pins containing different numbers of diamonds depending on the level.

US \$10,000 to 24,999.99 – Level One

25,000 to 49,999.99 – Level Two

50,000 to 99,999.99 – Level Three

100,000 to 499,999.99 – Level Four

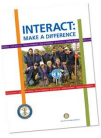
500,000 to 999,999.99 – Level Five

1,000,000 or greater – Level Six

If you're passionate about The Rotary Foundation and have the ability to make a significant contribution, then make a major difference and become a Major Donor.

For more information please contact Joel.Smith@rotary.org

Rotary Publication Information



Interact: make a Difference 650DVD Promotional DVD is designed to inspire young people to join an Interact club and get Rotarians excited about sponsoring an Interact club in their community. Running time: 9mins *US\$15.00* Also includes a CD-ROM with the Interact brochure, handbook, poster faculty advisor guide and more

Abuse and Harassment Prevention Training Manual and Leader's Guide 775en Designed to help Rotarians provide a safe and secure environment for participants in RI youth programs. Includes a CD with electronic copies of the manual and slides. *US\$12.00*



An Introduction to Vocational Service 225en Provides information, resources and project ideas related to vocational service. *US\$2.00*

Orders can be placed on-line at www.rotary.org or via email, phone or fax.
For further information contact Michelle Fuller

Michelle.Fuller@rotary.org

Project LINK

Project LINK is an on-line searchable database which lists Rotary club and district community service projects in need of funding, volunteers, donated goods, and/or partners for a Rotary Foundation Matching Grant. It also consists of completed projects that can be used as examples of best practices. Rotarians can search for projects by country, project type, requirements, project status (completed or in need of assistance) or key word. Project LINK is available via the RI Web site and is updated monthly.

How can my club register a project on Project LINK?

A Rotary club with a community service project that needs assistance may register it with the Project LINK The WCS Project Data Form (784) and the RV International Site Registration Form (285) have been replaced by the "Project LINK Submission Form: Project Seeking Support", which is available as a Word.doc on the ProjectLINK page www.rotary.org/projectLINK (see Related Information). Clubs wanting to register a project on ProjectLINK should use the new form.

YOUR ROTARY CENTRE is at Level 2 / 100 George Street Parramatta. Home to

- Regional RI Head Office
- The Rotary International Shop (Official Literature, Books, DVD's and CD's)
- The Rotary Foundation (including The Australian Rotary Foundation Trust)
- Your Club and District Support team
- RI Financial Services
- RI Global Video Conference Centre

ANNUAL PROGRAMS FUND (APF)

- DOING GOOD IN THE WORLD

Some Rotarians don't realise that The Rotary Foundation accomplishes other great work along with PolioPlus. Below are some examples of payments made by your regional office at Parramatta for matching grants made in the last 12 months sourced from donations to the Annual Programs Fund (APF)

- Numerous clean water and sanitation projects Indonesia, Malaysia Philippines
- Medicines and medical supplies 6 month treatment of 1000 children afflicted with Koch's infection—Philippines
- Provide 9,972 sets of illustrated booklets for deaf children—Philippines
- 100 Hearing Aids for Children in the Philippines
- Provide fresh milk on weekly basis to 1500 children in Indonesia.
- To provide ambulance for sick people from remote villages in Indonesia
- Heart surgery for children in Indonesia (six children @ \$3,500USD)
- Aid to the Sudan
- Provide clean water to ex-lepers society Java Indonesia
- Provide Library in A Box—Indonesia
- Education to 18,000 students— on subject of illegal drugs—Philippines
- Provide furniture and equipment for school in Malaysia
- Eyeglasses, exams, and cataract surgery - Indonesia
- Mosquito nets through TRF

(For more information contact frank.pezzimenti@rotary.org)

INVESTMENTS ON THE WAY BACK

- The General Secretary Ed Futa gave an update on the investments of RI and TRF. He stated “that Positive market performance this fiscal year through September resulted in investment earnings of US\$11 million for Rotary International and \$58 million for The Rotary Foundation. We are continuing to see further improvement this quarter, though the markets remain volatile.”

Please use the attached link on Rotary.org for the full and complete version of his communication.

http://www.rotary.org/en/AboutUs/Financials/Announcements/Pages/091130_announce_gs_finance.aspx

(For more information contact frank.pezzimenti@rotary.org)